



ZULAL SUSTAINABILITY JOURNEY 2023

TABLE OF CONTENTS

1.Introduction

2.Sustainability Objectives

3.Sustainability Programmes and focused outcomes

- Energy Efficiency
- Water Saving Initiatives
- Waste Management and Recycling
- Biodiversity and Sustainable Landscaping
- Sustainable Gastronomic

4.Sustainability Mindset

5.Sustainability Projects - Upcoming

6.Corporates Social Responsibilities (CSR)

7.Regenerative Tourism

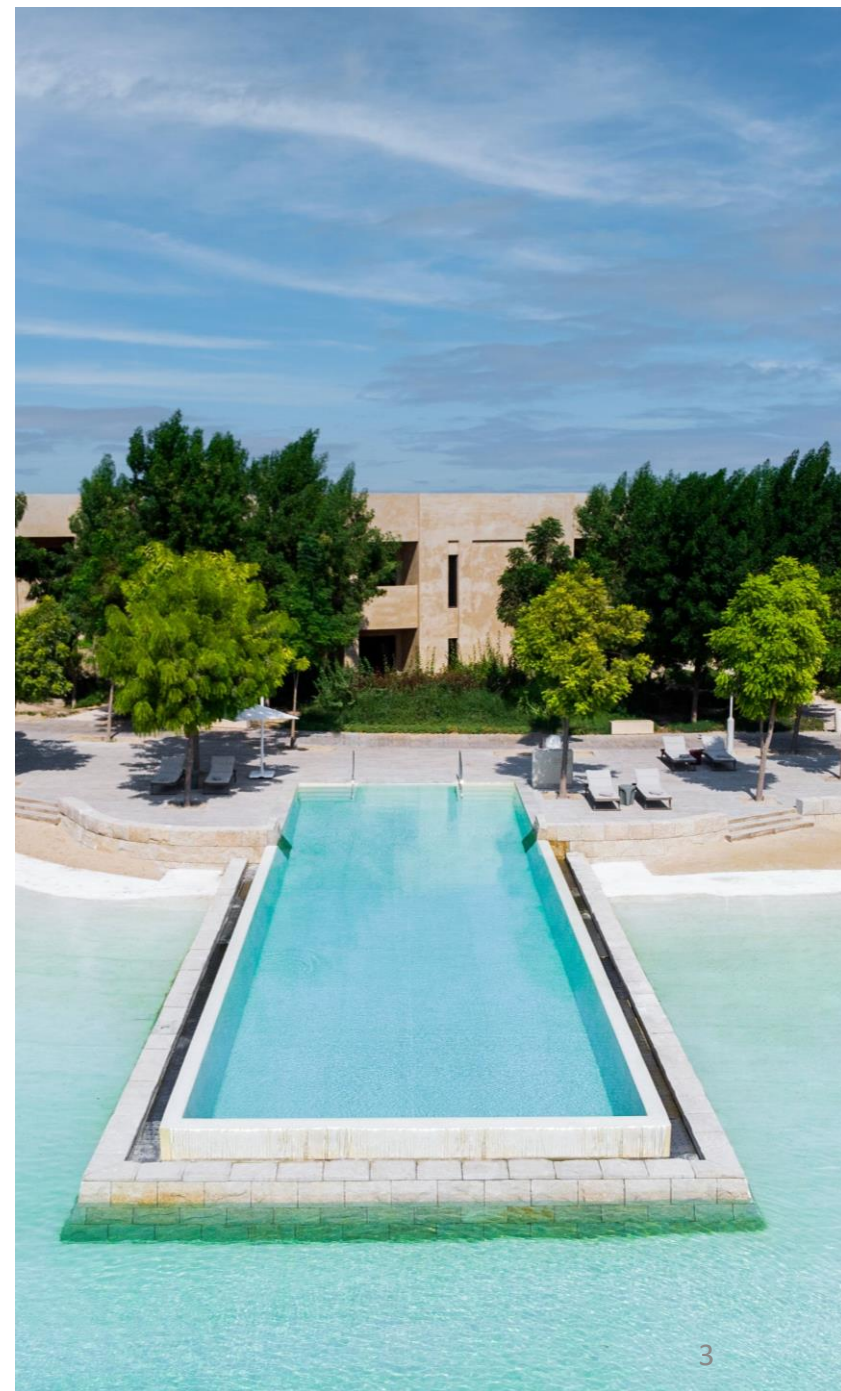


INTRODUCTION

- Promoting sustainability programmes at Zula Wellness by Chiva-Som through focused sustainable outcomes.

- Zula Wellness Resort has integrated sustainability into its core values and operations. From energy efficiency to regenerative tourism, Zula's commitment to a greener future is evident in every aspect of its operation.

- Zula Wellness Resort also takes the lead in promoting sustainable gastronomy.



SUSTAINABILITY OBJECTIVES



Water Consumption Management



Resource Consumption Management

Corporate Social Responsibilities



Sustainability Knowledge

Sustainability Acknowledgment



At Zual we consider **Quadruple-Bottom-Line-Approach** which includes stakeholder wellness.



SUSTAINABILITY PROGRAMMES

Empowering Change Through Programmes

Zulal Wellness Resort has implemented a range of innovative sustainability programmes, each contributing to our collective effort towards a greener future:

1. Eco-Friendly Construction: Infrastructure that has been built with sustainable materials and construction practices, ensuring minimal environmental disruption.

2. Green Energy Initiative: Implemented energy efficiency measures which significantly reduce our carbon footprint.

3. Biodiversity Gain: We prioritize sourcing local, organic ingredients for our culinary offerings. This supports local suppliers and reduces the environmental impact of food transportation.

4. Sustainable Mindset: Zulal engages with the local community through workshops, education, and support for initiatives that promote sustainability awareness and action.

5. Wildlife Habitat Restoration: Our commitment to biodiversity includes habitat restoration projects that enhance the local ecosystem and provide a home for native wildlife.

These programmes showcase our dedication to sustainability, demonstrating that every step counts towards a more harmonious future for our planet and its inhabitants.

ENERGY

Optimizing Building Efficiency and Energy Conservation

- **Strategic Building Design:** Meticulously designed buildings, incorporating efficient features, we enhanced overall building performance.
- **Smart Glazing and Insulation:** Cutting-edge thermal insulation and high-performance glazing, effectively reduces heat transfer and maintains optimal indoor temperatures.
- **Efficient Cooling with High Coefficient of Performance Values:** Effective cooling while minimizing energy consumption and environmental impact.
- **Heat Recovery for HVAC Efficiency:** Using technology we reclaim and repurpose waste heat.
- **Intelligent Lighting Controls:** Daylight sensors and timers to optimize the lux level to reduce energy use.



WATER EFFICIENCY FOR SUSTAINABILITY

- **Efficient Fixture Implementation:** Installation of water-efficient fixtures across its facilities, including guest rooms, spa, and public areas. Low flow faucets, showerheads, and low flush toilets collectively achieve a 30.82% reduction in fixture water use.
- **Sustainable Landscaping:** Water-efficient landscaping practices that utilize treated wastewater from the onsite treatment plant to nourish the landscape sustainably.
- **Native and Adaptive Plants:** We plant only native and adaptive plants suited to the desert location that are drought and/or saline tolerance to enhance the ecological value of the area and significantly reduce water consumption.
- Through these innovative water conservation strategies, we foster a sustainable environment and set an example for responsible water stewardship within the hospitality industry.



BIODIVERSITY & SUSTAINABLE LANDSCAPING

Sustainable Landscape Practices at ZWR

Our landscape operations embrace a sustainable approach that harmonizes environmental well-being and guest comfort:

- **Preserving Ecological Integrity:** Our foremost goal is to maintain the ecological balance of our landscapes. Through sustainable practices, we safeguard the integrity of the environment we inhabit.
- **Enhancing Biodiversity:** By nurturing native and adaptive plant species, we actively promote biodiversity. This not only beautifies our surroundings but also creates a thriving ecosystem that benefits all.
- **Thoughtful Irrigation Management:** Our irrigation water supply is managed with utmost care, using innovative techniques that optimize water distribution and minimize waste.
- **Mindful Pesticides and Fertilizers:** We're committed to responsible pesticide and fertilizer use, ensuring minimal impact on the environment and the health of our guests and staff.
- **Erosion and Sedimentation Control:** Through effective erosion and sedimentation control measures, we prevent soil erosion and maintain the natural beauty of our landscapes.



SUSTAINABLE PROCUREMENT AND MATERIAL SOURCING

At Zulal Wellness Resort, our commitment to sustainability begins at the purchasing stage, ensuring that our supplies align with our values:

- **Plastic-Free and Non-Toxic:** We prioritize suppliers who provide materials free from plastics and hazardous compounds. This for both our guests and the planet. guarantees a healthier environment
- **Biodegradable Focus:** Our materials must be non-biodegradable, contributing to reduced waste and a healthier ecosystem.
- **Carbon Footprint Minimization:** Sustainability is woven into our supply chain. We seek suppliers with minimal carbon footprints, reducing our impact on climate change.
- **High Quality and Durability:** Quality matters. We choose items that not only meet sustainability standards but also offer durability and a longer lifecycle.

SUSTAINABLE PROCUREMENT AND MATERIAL SOURCING

Supplier Selection Criteria: A Holistic Approach

When selecting suppliers, we carefully evaluate several aspects:

- Local Origin
- Local Produce
- Environmental Considerations
- Thoughtful Packaging
- Certifications and Eco Labels

Material Upcycling

There are many items considered as used items after one-time use in guest related services that are still usable for another activity before disposing of them as waste material.

- Used and discarded guest room linen, uniforms, and other linen
- Guest room amenities
- Tissue boxes and tissue paper
- Used flipflops and slippers
- Candles and phasing out bar soap in favour of dispensers

SUSTAINABLE GASTRONOMIC PRACTICES

At Zulal Wellness Resort, our gastronomic journey is guided by sustainability principles:

Local Sourcing: Prioritizing local ingredients to support neighbouring communities and reduce food miles. This not only benefits local farmers but also enhances the freshness and flavours of our dishes.

Seasonal Flavours: Our menu dances with the seasons, featuring ingredients at their peak. This reduces the need for energy-intensive storage and transportation, aligning with our commitment to sustainability.

Organic Excellence: We embrace organic ingredients, steering clear of harmful chemicals and promoting healthier ecosystems.

Our dedication to sustainable gastronomy has been celebrated through recognition for:

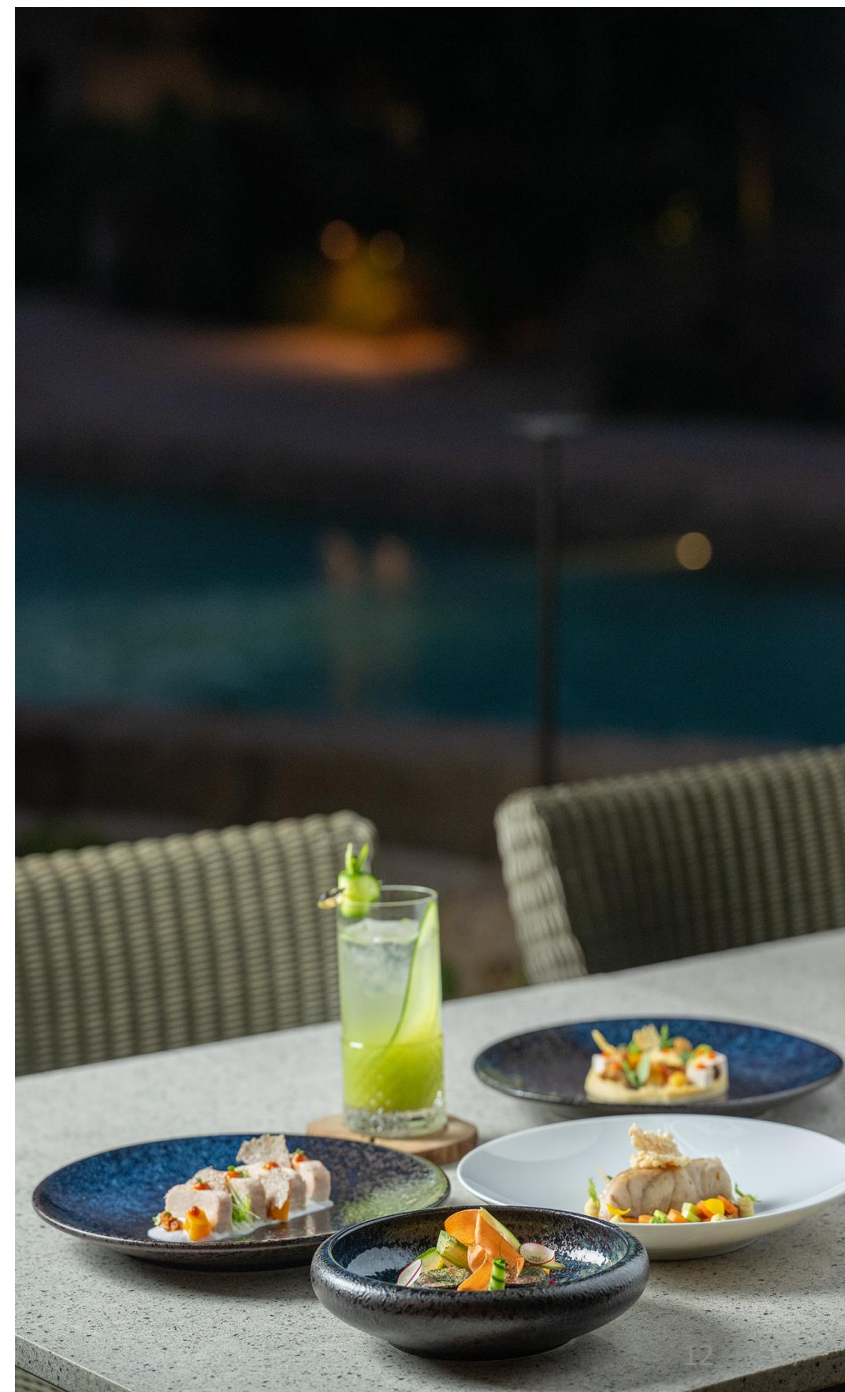
Diverse and Sustainable Menu: Offering a diverse menu that caters to various tastes while staying true to our sustainability principles.

Supporting Local Farmers: By sourcing ingredients locally, we create a symbiotic relationship with local farmers, fostering a resilient food system and reducing our environmental impact.

OUR CULINARY APPROACH

Zulal Wellness Resort culinary team spearheaded ingredients-driven cuisine, reducing carbon emissions across the food supply chain. Our restaurant's prioritizes animal welfare, committing to ethically sourced meat, eggs, and dairy, favouring organic and free-range, and exclusively using locally produced milk, cheese, and butter to support farmers while treating animals with compassion.

Responsibly Sourced Seafood: Our commitment extends to serving seafood that's certified sustainable by organizations like the Marine Stewardship Council. Our chefs are adept at utilizing lesser-known fish species to alleviate strain on overfished populations.



REDUCING WASTE & FOOD WASTE

- **Source Separation:** Waste begins at its source, with efficient separation for recycling.
- **Preventing Waste:** We focus on curbing waste generation through mindful practices.
- **Responsible Recycling:** Our commitment extends to responsible recycling methods.
- **Landfill Diversion:** Waste recovery from landfills is central to our sustainability mission.
- **Zero Waste Goal:** Our aspiration is to cultivate a culture of zero waste.
- **Data and Audits:** Waste data and annual audits guide our continuous improvement.
- **Reducing Food Waste:** We minimize food waste by utilizing ingredients fully, repurposing leftovers, and promoting creative culinary solutions.
- **No Food Waste Day in staff cafeteria:** four days a week the colleague dining room does not offer a bin to dispose of leftover food to reduce food waste.



FOSTERING A SUSTAINABILITY MINDSET

Cultivating Conscious Choices

At Zula Wellness Resort, nurturing a sustainability mindset is at the heart of our mission, extending beyond infrastructure and practices: We built the **Mangrove Education Deck** to interact with guests and share sustainability best practices and raise awareness.

- **Empower Staff:** Provide environmental responsibility training to all team members.
- **Inform Guests:** Interactive experiences educate and engage guests in our sustainability journey.
- **Engage Community:** Workshops and projects extend our commitment to local sustainability.

Our approach has led to a transformational impact:
Mindful Consumption and Inspired Community Actions.



UPCOMING SUSTAINABILITY PROJECTS

1. Mangrove Nursery: We have commenced a dedicated mangrove restoration project at Zulal Wellness Resort to include a mangrove nursery helping protect and restore local coastal ecosystems.

2. On-Site Food Waste Composting: An on-site composting machine will transform food waste into valuable compost.

3. On-Site Organic Garden with Hydroponics: Our organic garden, featuring hydroponics, will provide fresh ingredients year-round.

4. Solar Energy Project: Solar panels on parking and rooftops will significantly reduce our carbon footprint.

5. Water from Air and Bottling Station: Introducing a water-from-air initiative with an on-site bottling station for sustainable hydration.

CORPORATE SOCIAL RESPONSIBILITY (CSR)

Zulal Wellness Resort takes its commitment to Corporate Social Responsibility seriously:

- Community Development:** We actively engage in projects that uplift the local community, fostering growth and sustainable progress.
- Philanthropic Endeavours:** Our philanthropic efforts extend a helping hand to causes that align with our values, creating a ripple of positive change.
- Local Partnerships:** Collaborating with local organizations, we amplify the impact of our CSR initiatives, uniting for a stronger community.

Earth Hour, Mangrove Planting, Medical Screening.



REGENERATIVE TOURISM

Elevating Communities and Ecosystems

Zulal Wellness Resort's approach to regenerative tourism is about more than just minimizing impact, it's about leaving a positive mark:

- Community Empowerment:** We believe in tourism that empowers. By collaborating with local communities, we create opportunities for economic growth and cultural exchange.
- Ecosystem Restoration:** Our regenerative approach extends to the environment. Through responsible practices, we aim to restore and enhance the natural beauty of our surroundings.
- Educational Experiences:** We inspire guests to be active participants in our regenerative journey. Through immersive experiences, we foster a deeper understanding of the environment and its importance.

Through regenerative tourism, Zulal Wellness Resort strives to leave destinations better than we found them, shaping a sustainable future for both the local community and the environment.



